

Ralph M. Chait Galleries INC.

CHINESE ART

ESTABLISHED 1910



**CELEBRATING OUR 115TH YEAR
SPRING 2025**

Asia Week and Spring 2025



This Asia Week is especially significant for our gallery as we celebrate our 115th Anniversary year! Founded in 1910 by our namesake Ralph M. Chait, it continues now into its fourth generation. We include some vintage photographs below of our founder along with his famous office with its dragon mural wall in a previous gallery location from the 1930s.

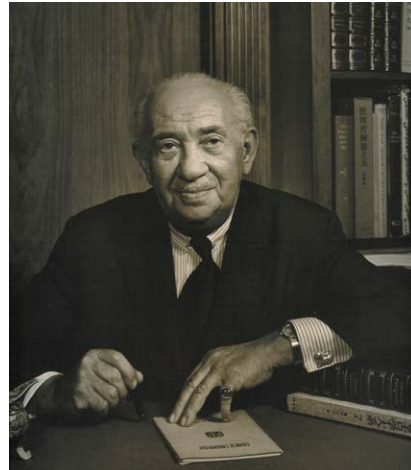
Commensurate with this theme, we are delighted to present in this catalogue and exhibition a variety of fine Chinese porcelains and works of art including Imperial works and the highest quality decorative arts that found their way into important collections in Europe, and in time, important American collections as well.

Included are an impressive pair of Imperial plates

with emerald green dragons, an important reverse blue ground lotus and carp dish, a magnificent stone sculpture of a guardian lion, a superb carved celadon vase, and a group of rare and unusual Canton enamels from a private collection. A coincidence of acquisition brought us a group of porcelains made for the French aristocratic market. Additionally we include superb examples in many other directions.

And most gratifying and connected to our history, many of these pieces in this exhibition passed through our gallery many decades ago. Our 115-year history is indeed intertwined with our present, and we look forward to the generations ahead as well. We welcome your inquiries and visits to our gallery during this Asia Week and year-round!

Andrew, Steven, and Joshua Chait



1. Fine and Rare Chinese Carved Stone Guardian Lion

LATE MING/ EARLY QING DYNASTY, CA: 17TH CENTURY

(ILLUSTRATED ON COVER)

Carved in the full round, the Lion is posed seated upon its haunches upon a balustraded base. Of powerful form, with animated face and well-defined features. The style is directly based upon Tang dynasty prototypes. The size and embellishments of the fur, flame designs at the shoulders, and bell collar are indicative of a Ming or early Qing date.

Height: 21 ½ inches (54.5 cm.)

Large stone sculpture of this type is very rare. A related lion (but only 12 inches high) was in the collection of George Eumorfopoulos and exhibited in *Arts de la Chine Ancienne*, at the Orangerie de Tuileries, Paris, 1937, No. D. 672.

Ex: Private American Collection

Ex Collection: Winston Guest

Ex: C.T. Loo/ Frank Caro, New York in the mid-1900s.

Listed in an inventory of the Guest Collection by Frank Caro.

Illustrated in the Guest Long Island Estate: *House and Garden*, front cover October, 1988.



2

2. Pair of Chinese Imperial Green Enameled Porcelain Dragon Dishes

QIANLONG MARK AND PERIOD,
AD 1736-1795

Finely and thinly potted. Based on a Ming prototype: decorated with rampant five-clawed Imperial Dragons chasing a flaming pearl. Painted in a vibrant emerald green.

Diameter: 6 7/8 inches (17.4 cm.)

Ex: Private American Collection (acquired from our gallery in 1967).

Prior in a New York Collection

Similar examples: Victoria and Albert Museum, London and the National Palace Museum, Taipei.

3. Chinese Imperial Reverse Blue Glaze Porcelain Dish with Carp and Lotus

MID-18TH CENTURY

Finely modeled; the reserve decoration done with great detail. Based upon early Imperial Ming prototypes (see examples in the Palace Museum, Beijing and British Museum), then revived in the early 18th century.

Diameter: 7 1/4 inches (18.5 cm.)



3

Ex: Private American Collection (acquired from Sydney Moss in 1971).

Prior believed to have been with Bluett, London



4

4. Rare Very Large Chinese Bronze Archaistic Vessel *Lei*

CA: 17TH / 18TH CENTURY

Of unusual large and impressive size and finely cast.

Based directly upon an archaic bronze type from the Shang dynasty. *Lei* vessels were used to hold wine for ritual purposes. Decorated overall with *taotieh* masks and embellishments, all finely detailed.

Most archaistic versions of this type are found in much smaller size.

Height 29 ½ inches (75 cm.)

Ex: Private American Collection (acquired in Europe)



5

5. Chinese *Sancai* Glazed Biscuit Porcelain Figure of Guandi

LATE MING/ EARLY KANGXI PERIOD, CA: MID-17TH CENTURY

Posed seated and wearing a long green robe over yellow armor. His face is left en biscuit and is finely modelled with detailed features.

Height: 13 inches (33 cm.)

With custom fitted base.

Ex: Private American Collection

Ex Collection Frederick Van Slyke, Baltimore (mid-20th century collection)



6. Large Chinese Sancai Glazed Pottery Figure of a Lokapala

TANG DYNASTY, AD 618-907

Posed standing upon a bull with arm raised displaying his power.

Height: 32 ¼ inches (82 cm.)

Ex: Private American Collection (acquired in the Far East in the mid-1950s)

Similar examples: Laufer, *Chinese Clay Figures*, pl. LII from the Field Museum of Natural History, Chicago; *Sekai Toji Zenshu*, Vol. 9, figs 76 and 117 from the Tenri Sanko-kan Museum, Nara; *Hints, Chinese Tomb Figures*, pl. 108; and the Berlin Chinese Art Exhibition, 1929, No. 366 from the Goldschmidt Collection; and Essayan Collection, England.

TL tested.

7. Chinese Unglazed Pottery Horse and Groom

TANG DYNASTY, AD 618-907

Finely modelled, the horse standing foursquare with head held straight and turned towards the viewer.

The horse is saddled with bridal painted onto his head. The Groom, posed standing with arms raised as if holding the horse's reins. The figure has non-Chinese features and is likely meant to depict a foreigner from the Silk Road. He is dressed in a long robe with peaked cap amusingly arranged in a zigzag. Both with considerable vestiges of red pigment and white slip.

Height: 15 ¼ inches (39 cm.)

Ex: Private New York Collection

Ex Collection: Arthur Newman

Ex: James Reardon Collection

Ex: J.J. Lally (acquired in the late 1980s)

With fitted wood base.

TL tested



7



8

8. Chinese Scholar's Rock, Ying Type

Of remarkable striated horizontal form resembling a dragon. With characteristic dimpled surface and light gray color.

Length: 22 inches (56 cm.)

Height: 10 ¾ inches (27.4 cm.)

Mounted on a fitted wood base.

Ex: American Collection, acquired from our Gallery in the 1980's.

Prior in a New England Collection



9

9. **Superb Large Blue and White Kraak Porcelain Charger**

WANLI PERIOD, MING DYNASTY, AD 1610-1630

Beautifully decorated with bird perched on rockery amidst flowering plants; the rim with reserves of flowers and auspicious symbols.

Diameter: 19 ¾ inches (50 cm.)

Ex: Lurie Collection, United States

Kraak ware was among the first Chinese porcelain traded to the Middle East and Western Europe. In Europe, where there was no comparable ceramics at the time, the introduction of porcelain from China set off a sensation in style and taste



10

10. Fine Chinese Blue and White Porcelain Vase

KANGXI PERIOD, MID/ LATE 17TH CENTURY

Of Gu form. Finely decorated in Chinese taste with scenes of the famed Red Cliff story of a group sailing on a lake at night. The moon and constellations are visible. Decorated overall in fine painterly style with great detailing and “blobby” dot designs that were classic of the Transitional period and carried over into the early Kangxi period.

The underfoot with an apocryphal six character Jiajing, Ming dynasty mark

Height: 18 ¼ inches (46 cm.)

Ex: Jie Rui Tang Collection



11

11. Chinese Famille Verte Porcelain Plate

KANGXI PERIOD,
CA: EARLY 18TH CENTURY

Decorated with an assortment of Precious Antiques, Sacred Objects, and assorted vases with flowers.

All finely painted in bright enamels.

Diameter: 14 ¾ inches (37.5 cm.)

Ex Collection: Augustus the Strong (1670-1733), Elector of Saxony and King of Poland

With an incised Johanneum inventory mark on the underside reading: N 12 I

Another virtually identical example is in the Victoria & Albert Collection, London (Salting Collection)

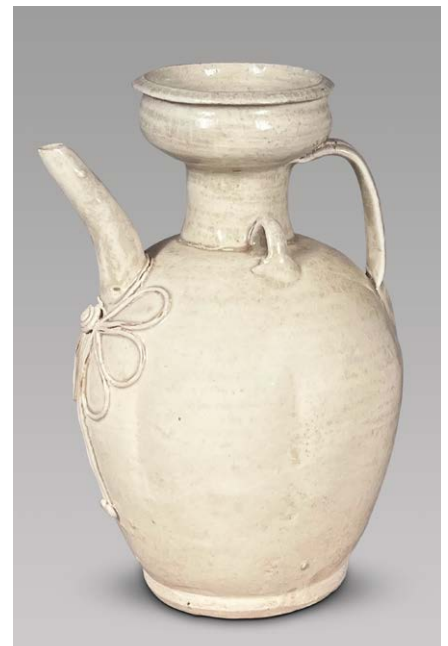
12. Chinese White Ware/ Qingbai Ewer with String Design

NORTHERN SONG DYNASTY,
CA: 11TH- 12TH CENTURY

Of elegant form and ornamented with a floral-shaped knot design beneath the spout.

Height: 7 ¾ inches (19.7 cm.)

Ex: Thomax Collection No. 1648, formed by Prof. Leif Sourander, Abo, Finland assembled from the 1960's-1990s, and exhibited at the Arabia Museum, Helsinki, Finland, September- October, 1994.



12



13

14

13. and 14. Two Chinese Carved Bamboo Brushpots

CA: 19TH CENTURY

One decorated with scholars gathered in a densely wooded setting, perhaps depicting the famed Lan Ting Gathering that included the noted figures drinking wine and engaging in scholarly pursuits including poetry and calligraphy. The second, decorated with Cabbage and Toad representing prosperity and good luck.

Heights: 6 ¾ and 6 ¼ inches (17.3 and 16 cm.)

Ex: Private American Collection

Formerly in the collection of Gerry Mack, New York

15. Unusual Chinese Sang de Boeuf Glazed Porcelain Hu Vase

CA: 18TH/ 19TH CENTURY

Of archaistic form, with two lion-head handles and fixed rings. Glazed overall in variegated red and crackled glaze of varying shades.

Height: 6 ½ inches (16.5 cm.)

Ex: Private American Collection



15



16

16. Large Chinese Blue and White Porcelain Figure of Zhenwu

WANLI PERIOD, MING DYNASTY, 1573-1620 AD

Finely and powerfully modeled and of unusual larger size. Posed seated upon a throne and wearing a long robe decorated with a dragon. Zhenwu was a high-ranking Daoist warrior deity of the North, who had control over water. He was revered as a Guardian of the Ming dynasty.

Height 12 $\frac{7}{8}$ inches (32.7 cm.)

A similar large sized figure of Zhenwu from the collection of C.T. Loo was exhibited in *An Exhibition of Blue-Decorated Porcelain of the Ming Dynasty*, at the Philadelphia Museum of Art, 1949, cat. No. 126 Another was formerly in the Falk Collection.



17

17. Rare Pair of Large Chinese Verte Glazed Biscuit Porcelain Fu Lions

KANGXI PERIOD, CA: LATE 17TH CENTURY

Each finely modelled and forming a true pair, male and female: the male with brocade ball; the female with a cub at her side. Posed seated upright on their haunches and mounted upon integral rectangular bases decorated with reserves of Precious Antiques set upon a cracked ice ground. The bodies of the Fu Lions are glazed yellow; their heads in green; and manes and curls in green, aubergine, and blue. Their foreheads bear a *Wang* symbol meaning Emperor or Ruler.

Height: 16 ½ inches (42 cm.)

Ex: Private American Collection

Ex Collection: Michel Beurdeley, France

Illustrated: *La Ceramique Chinoise* by J.P. Goidsenhoven, Plate LXIX.

Identical examples of varying colors may be found in important private and museum collections including the historic Collection of Augustus Strong at the Zwinger Museum, Dresden; the Swedish Royal Collection; the British Royal Collection; Philadelphia Museum of Art (Gow Collection); and former collection of Winston Guest.



18

18. Chinese Blue and White Porcelain Meiping

KANGXI PERIOD,
AD 1662-1722

Of elegant and shapely form. Decorated with a scholar in a seaside mountainscape, all finely painted in vibrant underglaze blue.

Height: 8 ½ inches (21.5 cm.)

Ex Collection: James Breece
Prior in an English Collection

19. Chinese Blue and White Porcelain Bowl

KANGXI PERIOD,
AD 1662-1722

Of molded form with foliated lip. Decorated with reserves of Court Ladies at various pursuits; and Boys playing various games symbolic of achievement and success. With stylized lotus heads around the base.

The underfoot with a commendation mark meaning: "Precious as a Treasured Antique Green Jade Vessel."

Height: 4 inches (10 cm.)

Diameter: 8 ¼ inches (21 cm.)

Ex: European Collection

20. Pair of Chinese Powder Blue and Underglaze Red Porcelain Bowls

KANGXI PERIOD,
AD 1662-1722

Decorated with carp painted in underglaze red of fine color, and set against a deep flocculent powder blue ground.

Diameter: 5 ¾ inches (14.5 cm.)

Ex: Private American Collection
Prior with Stodel, Amsterdam



19



20



21

21. Very Rare Chinese Gilt Decorated Powder Blue Porcelain Plate

KANGXI PERIOD, AD 1662-1722

With *Luyi Hall* hallmark

Decorated entirely in gilt with a beautiful basket of flowers; the rim with mythical animals in outdoor settings. The underfoot bears a three character Palace hallmark in underglaze blue for Luyi Hall 葵漪堂 (also written 葵漪堂), located in Nanmen Village, Doumen Town, Zhuhai.

Diameter: 15 ¼ inches (39 cm.)

Ex: French Collection

Luyi Hall (also known as the Zhao Family Ancestral Hall) was built in 1454 (during the Ming Dynasty) by Zhao Long, a fifteenth-generation descendant of Zhao Kuangmei, who was the Prince of Wei and the younger brother of the Song Emperor Taizu, Zhao Kuangyin.



22

22. Very Rare Chinese Powder Blue and Famille Verte Porcelain Bowl

KANGXI PERIOD, CA: LATE 17TH CENTURY

Of broad and deep rounded form. The exterior most unusually decorated with petal reserves in different color combinations depicting flowers and landscapes.

The colored grounds include rouge de fer, famille jaune, and green ground.

Diameter: 12 ¼ inches (31 cm.)

Height: 6 ¼ inches (16 cm.)

Ex: Private American Collection

Ex Collection: J.P. Morgan

Ex Collection: James Garland (No. 1026)

Described in the Morgan Catalogue, Laffen and Bushell, 1904, Vol. 1, p. 86, No. 32.

Exhibited: Metropolitan Museum of Art from the late 19th century through 1915.

23. Pair of Chinese Famille Verte Porcelain Cabinet Rouleau Vases

KANGXI PERIOD, AD 1662-1722

Each finely decorated, one with the Immortal Shoulao and attendant; the other with a water carrier and possibly one of the Happiness Twins. All finely painted in bright enamels.

Height: 8 inches (20 cm.)

Ex: Private American Collection (acquired from our gallery in the 1970s).



23



24

24. Pair of Chinese Powder Blue and Famille Verte Porcelain Jars and Covers

KANGXI PERIOD, CA: 1700

Of ovoid form with dome shaped covers. Decorated with reserves in famille verte of phoenixes, flowers, and rockery; set against a vibrant powder blue ground with gilt embellishments of flowers and rockery.

Height: 13 ¼ inches (33.5 cm.)

With gilded wood bases.

Ex Collection: James Breece

Ex Collection: John Manrod (acquired from our gallery in the early 1980s)

Almost identical and variant examples: historic collection of Augustus the Strong at the Zwinger Museum, Dresden; Rijksmuseum, Amsterdam; and Taft Museum, Cincinnati.

25. Pair of Chinese Famille Verte Porcelain Helmet Shaped Bowls

KANGXI PERIOD, AD 1662-1722

Decorated on the exterior with an abundance of flowering plants and rockery, with birds and butterflies; the wide flanged rim, with peach-shaped reserves of butterflies set upon a seeded green ground with flowers. All brightly painted.

Diameter: 7 ¼ inches (18.5 cm.)

Height: 3 ½ inches (8.5 cm.)



25



26

26. Pair of Chinese Export Porcelain Cranes

QIANLONG PERIOD, CA: MID-18TH CENTURY

Finely modelled and forming a true pair, right and left. Each posed on rockery with heads held straight and looking at the viewer. The birds with elaborately incised designs done to imitate plumage. Glazed in white with touches of beige/gold and with black edges with gilt details. The rockeries in turquoise and blue.

Heights: 17 inches (43 cm.)

Ex: American Collection (acquired in London in the 1960s)

Similar examples of varying sizes may be found in many fine collections throughout the world including the Copeland Collection now at the Peabody Essex Museum, the Conde Collection, and the Chinese Pavilion at Drottningholm, Sweden.

27. Rare and Important Pair of Chinese Export Porcelain Figures

KANGXI PERIOD,
EARLY 18TH CENTURY

Traditionally identified as the French noble figures of the Dauphin (son of Louis IV) and Mme. de Maintenon. The figures are likely based upon French aristocrats depicted in the engravings of the famed Bonnard brothers that were brought to China and copied onto porcelain plates and vases usually in blue and white. The exceptional quality and colors of these types of figures make them particularly prized. They are also to our knowledge the earliest figural depictions of Westerners in Chinese porcelain made at Jingdezhen.

Height of the Man:
8 ¾ inches (22.2 cm.)
Height of the Woman:
9 inches (23 cm.)

Similar examples: the Copeland Collection now at the Peabody Essex Museum, Salem; the Victoria & Albert Museum, London; and the historic collection of Augustus the Strong now the Zwinger Museum, Dresden; the Musee National Adrien Duboche, Limoges; and the Espirito Santo Collection (now in a private South American Collection).



27



28. Chinese Armorial Porcelain Wine Cooler with The Royal Arms of France

CA: 1720

Part of a large French royal service that included various forms and dishes, some copied from French silver and ceramic forms. The service is believed to have been ordered for Louis XV (1710-74) by Philippe II, Duc d'Orléans (1674-1723), the Regent of France (1715-22) or another high member of the French court.

Height: 4 ¾ inches (11.8 cm.)
Diameter: 5 ¼ inches (13.3 cm.)

28



29

It remains unclear whether the service ever reached its intended royal recipient. The service does not appear in the royal inventories of 1718, 1729 or 1775, that suggests it either was owned by the [young] king and disposed of at some point before being inventoried, or was bought as a gift for the king but never delivered" to him (see: Fuchs, *Made in China, Export Porcelain from the Leo and Doris Hodroff Collection*, 2005, No. 53, pp. 92-93).

Ex: Private American Collection

Ex Collection: Pauline K. Cave, sold at Sotheby's New York, November 16, 1984, Lot. 81

An almost identical wine cooler was in the collection of Khalil Rizk and sold at Sotheby's, New York on April 25, 2008, Lot 3.

29. Pair of Chinese Export Porcelain "Urne Mysterieuse" Pistol Handled Vases and Covers

CA: 1795

Of classic form, each with a central medallion- painted in grisaille showing an urn under a willow tree (a sign of mourning). The profile of the base the urn has a secret design showing the silhouettes of Louis XVI and Marie Antoinette. The other side has a medallion with a scenic vignette. The urns otherwise decorated in relief with swags in blue, and borders with leaves and stars in blue, red, and gold; the bases in faux marble.

Height: 14 7/8 inches (37.8 cm.)

The hidden subject was based upon an anonymous engraving made during the French Revolution for loyalists as a remembrance of the deposed monarchy. For a similar pair of vases mounted in bronze from the Lataillade Collection, Paris and discussion, see: Beurdeley, *China Trade Porcelain*, 1962, p. 106, Pl. XIV



30

30. Fine and Large Chinese Rose Verte Porcelain Charger

YONGZHENG PERIOD, AD 1723-1735

Of impressive size. Decorated with a large central scene from a historic tale or romance, depicting the departure of a gentleman from a palace and bidding farewell to his lady love, who sits on a terrace above. The flanged border with reserves of the famed Tang dynasty poet Libo in different vignettes. All very finely and exuberantly painted in bright enamels. Of rare size and superb quality.

Diameter: 21 inches (54 cm.)

Ex: Private American Collection

An almost identical Charger is in the Louvre Museum, Paris, donated in 1881 by Adolphe Thiers (former President of the third French Republic).



31

31. Rare Chinese Imperial Enamel on Copper Lantern Pagoda

QIANLONG FOUR CHARACTER MARK AND PERIOD,
CA: MID-18TH CENTURY

Of unusual and interesting architectural form, the pagoda structure with hinged door revealing a candleholder in the interior. Finely decorated with flower and tendril designs; the roof with straited colored designs imitating the beams. All finely decorated in bright colors.

Height: 19 ½ inches (49.5 cm.)

Ex: Private New York Collection





32

32. Pair of Large Canton Enamel Plates

QIANLONG PERIOD, CA: MID- 18TH CENTURY

Unusual in forming a pair, right and left. Decorated with flowering plants and butterflies; bordered by a narrow yellow band with flowers and tendrils; the rim with floral reserves and medallions set upon a purplish diaper ground. The reverse side with complementary decoration, and the underfoot with *chilin* in blue upon a yellow ground. Of fine quality with stylistic reference to porcelain plates of the period.

Diameter: 10 $\frac{3}{8}$ inches (26.4 cm.)

Ex: Private New York Collection





33



33. Rare Large Canton Enamel Pomander and Basin
QIANLONG PERIOD, CA; MID-18TH CENTURY

Of impressive size. Beautifully decorated with flowers and butterflies in bright colors. The sides and cover with intricate openwork designs of clouds and cash motifs.

Diameter: 12 $\frac{3}{8}$ inches (31.5 cm.)

Height: 6 $\frac{1}{4}$ inches (16 cm.)

A very similar example is in the Hermitage, St. Petersburg (Arapova, 1988 Nos. 90 and 91).

Ex: Private New York Collection



34

34. Pair of Chinese Imari Armorial Porcelain Chargers

EARLY 18TH CENTURY

Arms of Overveldt, Holland

Of impressive large size. Exuberantly decorated, with a central circular reserve and garland-like crest with banner above reading PAMEN; surrounded by large lappet and trefoil shaped patterns of flowering plants and large Fu Lions. All boldly painted in deep and rich enamels of underglaze blue, rouge de fer, and gold. The undersides with additional floral designs in rouge de fer.

Diameter: 20 ¼ inches (51.5 cm.)

Ex: Important Private American West Coast Collection

Believed made for the Overveldt family of the Hague (Kroes, *Chinese Armorial Porcelain for the Dutch Market*, No. 16, p. 115.

It is noted that the fine and extraordinary decoration is demonstrative of the wealth and prestige of the family.



35

35. Rare Pair of Chinese Export Famille Rose Porcelain Urns and Covers

QIANLONG PERIOD, CA: LATE 18TH CENTURY

Of fine form. Based upon a Marienburg faience type. Decorated with oval landscape reserves, tassel frames in green, and rouge de fer and pink festoons over the shoulder. The enameled colors of these vases are very rare, as most others are found in blue and white.

Height: 17 ½ inches (44.5 cm.)

Ex: American Collection (acquired from our gallery in the 1980s)

Prior in a French Collection

Blue and white examples may be found in important museum collections including the Metropolitan Museum of Art (from the McCann collection), New York and Winterthur, Wilmington.

36. Chinese Export Armorial Porcelain Plate

CA: 1738

Decorated with the arms of Baker qu. Cholmly. All vibrantly painted in bright enamels.

Diameter: 11 ½ inches (29 cm.)



36

37. Chinese Famille Verte Porcelain Wine Cooler

KANGXI PERIOD, CA: 1700 AD

Of broad cylindrical form with slightly pronounced rounded lip, tapered pedestal base, and lion-head stylized handles on either side. Very beautifully painted with peonies and tendrils and birds in the central section; the upper area with phoenixes and flowers set upon a dark green-swirled ground. Of particularly fine quality painting and bright enamels.

Height: 6 ¾ inches (17.2 cm.)

Diameter at lip: 8 inches (20.2 cm.)

38. Fine Canton Enamel Hexagonal Teapot/Winepot

QIANLONG PERIOD,
CA: MID-18TH CENTURY

Decorated with inebriated scholars in a garden. One reads poetry, another drains a wine pot, while others are collapsed or asleep from their drinking. All finely painted. An unusual subject rather humorously depicted.

Height: 6 ¾ inches (17 cm.)

Ex: Private New York Collection



37

39. Pair of Chinese Famille Rose Porcelain Octagon Plates

YONGZHENG PERIOD,
CA: 1730s

Finely decorated with a seated Court lady and children amidst an abundance of Precious Antiques.

Diameter: 8 inches (20.5 cm.)

Almost identical examples: historic collection of Augustus the Strong at the Zwinger Museum, Dresden; the Victoria & Albert Museum, London; and the Metropolitan Museum of Art, New York.



reverse side

38



39

40. Fine Canton Enamel Square Shaped Teapot/Winepot

QIANLONG PERIOD,
CA: MID-18TH CENTURY

Decorated with scenes of European figures in outdoor setting. All very finely painted in bright colors and set against a light blue diaper ground.

Height: 6 7/8 inches (17.5 cm.)

Ex: Private New York Collection



reverse side

40



41

41. Rare Pair of Chinese Export Famille Rose Pronk Porcelain Jugs

CA: 1740

Each decorated with the “Arbor Scene” designed by the Dutch artist Cornelis Pronk, with a chinoiserie decoration showing Chinese ladies and gentlemen in a garden setting. All finely painted in bright enamels.

Height: 9 ¾ inches (24.8 cm.)

Ex: Robert Lehman (1891-1969), the American financier and art collector. He was a former head of Lehman Brothers Investment Bank. Then, descended in the family.

Note: This is a rare form for this subject and has counterparts in Delft ware jugs of the period, and interestingly seem connected to an original earlier Iznik form. Pronk’s designs were used by the Dutch East India Company to create services and objects in China and then export them to Holland as part of the China Trade of the time. The intent was a tighter control of decoration that retained the exoticness of China from a European perspective that would be easily marketable to the Dutch audience.

42. Superb Chinese Export Reverse Glass Painting, *Astrea Instructing Arthegal*

CA: 1790-1800

Based upon the mezzo tint by Maria Cosway (ca: 1785) of the scene from Edmund Spenser’s *The Faerie Queene*, Book V, Canto I. Spenser’s epic allegorical poem on virtue was written in the late 16th century and presented to Queen Elizabeth.

Framed: 32 ½ x 26 inches (82.5 x 66 cm.)

This is an interesting subject to have entered into the China Trade and emerge as a reverse glass painting. Certainly, one of Cosway’s prints of this subject was taken to China and copied in this very difficult technique by an artist in Canton, and then exported to England. The quality of the painting is masterful and the faithfulness to the original is of note. The colors are also wonderfully done. The complexity of the reverse glass painting technique was mastered in China and was an element of the China Trade from the 18th century onward. The fragility of the glass and its surviving the journey is further both fortunate and remarkable. An original print by Cosway of this scene is in the British Museum.



42

43. Large Chinese Carved Celadon Glazed Porcelain Bottle Vase

CA: LATE 18TH/ EARLY 19TH CENTURY

(ILLUSTRATED ON BACK COVER)

Of impressive size. Finely decorated overall with lotus flowers and tendrils in high relief. Glazed overall in a deep and vibrant celadon tone. In Chinese lore, the lotus was associated with Buddhism and was symbolic of purity, enlightenment, and reincarnation.

Height: 23 inches (58.4 cm.)

Ex Collection: James Breece

Formerly in the Collection of the Cleveland Museum of Art (donated in 1939 by family members in honor Leonard C. Hanna).



RALPH M. CHAIT GALLERIES INC.

16 East 52nd Street
10th Floor
New York, NY 10022

Tel: 212-397-2818

info@rmchaitgal.net
www.rmchait.com