

Ralph M. Chait Galleries INC.

CHINESE ART

ESTABLISHED 1910



SUMMER 2024



16 East 52nd Street, 10th Floor, New York, NY 10022
Tel: 212-397-2818 Email: info@rmchaitgal.net
Web: www.rmchait.com

Our Summer Booklet contains a fine and interesting variety of Chinese porcelains and works of art. These include some Olympics-appropriate acrobats from the 1st century to depictions of French aristocrats from the early 18th century that to our knowledge are among the first figural representations of Westerners in Chinese porcelain from Jingdezhen. In between are some fine examples of archaic bronze, Chinese export reverse glass paintings, Blanc de Chine, and a very rare early American China Trade teapot with a Sailor Farewell subject. Please have a look indeed! We will be exhibiting in the Nantucket Show: August 9-12. We will otherwise will be open at our gallery the entire summer, Monday to Friday from 10 AM - 6 PM and outside these hours by appointment. If you will be in New York in the coming months or in Nantucket at the time of the Show, do visit us. It would be a pleasure to meet with you and show you through our entire collection. In the interim we would be pleased to hear from you with any inquiries by email or phone.

Steven and Andrew Chait



2

1. Chinese Famille Verte Porcelain
Baluster Vase

(ILLUSTRATED ON COVER)

KANGXI PERIOD, AD 1662-1722

Finely decorated with Court Ladies in a Palace Garden engaged in the scholarly accomplishments of painting and calligraphy. All finely painted in bright and vibrant enamels.

Height: 18 inches (45.72 cm.)

Ex: Private American Collection

Ex: Goldmuntz Collection, Belgium (illustrated and described: Van Goidsenhoven, *Heros et Divinities de la Chine*, 1971.

2. Chinese Export Porcelain American
Market Sailor's Farewell Teapot

CA: LATE 18TH CENTURY

Decorated with a sailor and his love embraced in anticipation of his departure on a voyage. They are situated on a hill next to harbor with his ship visible and notably flying the American flag. This is a rare early depiction of a scene more often found with British ship.

Height: 5 3/8 inches (14.5 cm.)



3

3. Rare and Important Pair of Chinese Export Porcelain Figures

KANGXI PERIOD, EARLY 18TH CENTURY

Traditionally identified as the French noble figures of the Dauphin (son of Louis IV) and Mme. de Maintenon. The figures are likely based upon French aristocrats depicted in the engravings of the famed Bonnard brothers that were brought to China and copied onto porcelain plates and vases usually in blue and white. The exceptional quality and colors of these types of figures make them particularly prized. They are also to our knowledge the earliest figural depictions of Westerners in Chinese porcelain made at Jingdezhen.

Height of the Man: 8 ¾ inches (22.2 cm.)

Height of the Woman: 9 inches (23 cm.)

Similar examples: the Copeland Collection now at the Peabody Essex Museum, Salem; the Victoria & Albert Museum, London; and the historic collection of Augustus the Strong now the Zwinger Museum, Dresden; the Musee National Adrien Duboche, Limoges; and the Espirito Santo Collection (now in a private South American Collection).



4

4. Chinese Blue and White Porcelain Cabinet Rouleau Vase

KANGXI PERIOD, AD 1662-1722

Decorated with two seascapes with small boats and figures, each contained within a sacred-fruit-shaped reserve. The neck with pattered designs.

Height: 10 ¼ inches (26 cm.)

Ex: Private American Collection (acquired in the late 1970's)

5. Pair of Chinese Blue and White Porcelain Plates

KANGXI PERIOD, CA: LATE 17TH CENTURY

Each finely decorated with a warrior standing before a pair of ladies (possibly the Yang sisters) with troops implied behind banners in the foreground. All are finely painted in deep underglaze blue. The reverse sides, with landscape decoration along the sides.

Diameter: 8 ¼ (21 cm.)

Ex: Private American Collection

Scenes from classic tales such as the *Three Kingdoms* and *Yang Daughters* were popular in the mid and late 17th century. Themes from these stories about loyalty to the Emperor and personal fortitude had direct ties to the emotions surrounding the new Qing dynasty and served to attach it to classical Chinese history and lore.



5



6

6. Blanc de Chine Porcelain Group of Guandi Riding upon his Horse
CA: MID 17TH CENTURY/ EARLY KANGXI PERIOD

Finely modelled in the full round. The figure is dressed in long robe and armor, with fine detailing. His face displays a dignified expression; the horse alert and with detailing to saddle and trappings.

Height: 12 inches (30 cm.)

7. Chinese Unglazed Pottery Court Lady
TANG DYNASTY, AD 618-907

Finely modelled. The classic corpulent Lady is elegantly dressed in a long robe with pointed shoes protruding from beneath the hem, and her hair arranged in a stylish coiffure. Her face is well modelled with subtle features and with serene expression. Retaining vestiges of slip decoration.

Height: 17 ¾ inches (45 cm.)

Ex: European Collection (acquired from Gisèle Croës, Belgium in the late 1990s).
TL tested.





8

8. Chinese Archaistic Bronze Vase,
Fanggu

LATE MING/ EARLY QING DYNASTY,
CA: 17TH CENTURY

Based upon an archaic bronze form with
flanges. Decorated with characteristic
decoration including *taotieh* masks and
cicada panels

Height 7 ¾ inches (19.5 cm.)

With fitted wood stand.

Provenance: European private collection,
acquired in the 1930s.

9. Pair of Chinese Unglazed Pottery
Figures of Acrobats

HAN DYNASTY,
CA: 1ST CENTURY AD

Masterfully modelled in
motion, with legs and arms in
gymnastic poses; their faces
with determined expressions.
Retaining vestiges of slip
decoration.

Height of figures:

5 ½ inches (14 cm.)

Height with base:

6 ½ inches (16.5 cm.)

Length with base:

8 ½ inches (21.6 cm.)

Creatively mounted
on a stand with
parallel bars that
captures their spirit
and motion.



9



10. Chinese Gilt-Lacquered
Bronze Figure of a
Bodhisattva

MING DYNASTY,
16TH CENTURY,
DATED 1593

Finely modelled and posed seated on a lotus throne in a meditative pose. Her hands are held in the *vitarka mudra* representing the discussion and transmission of the teachings by the Buddha. She holds a lotus in her left hand and wears an elaborate beaded necklace and crown. Her face is sensitively modelled with expressive features, her hair is arranged in a high chignon.

The back of the throne is incised with an incised dedicatory inscription and cyclical date corresponding to 1593.

Height: 8 ¼ inches (21 cm.)

10

11. Fine Pair of Chinese Blue
and White Porcelain
Triple Gourd Vases

KANGXI PERIOD,
AD 1662-1722

Decorated with archaic
taotieh designs taken from
archaic bronze, all finely
painted in deep and vibrant
underglaze blue.

Height: 9 ½ inches (24 cm.)

Ex: Private American Collection
(1990s) and prior in another
American Collection (1980s)
In both cases, acquired from
our gallery.

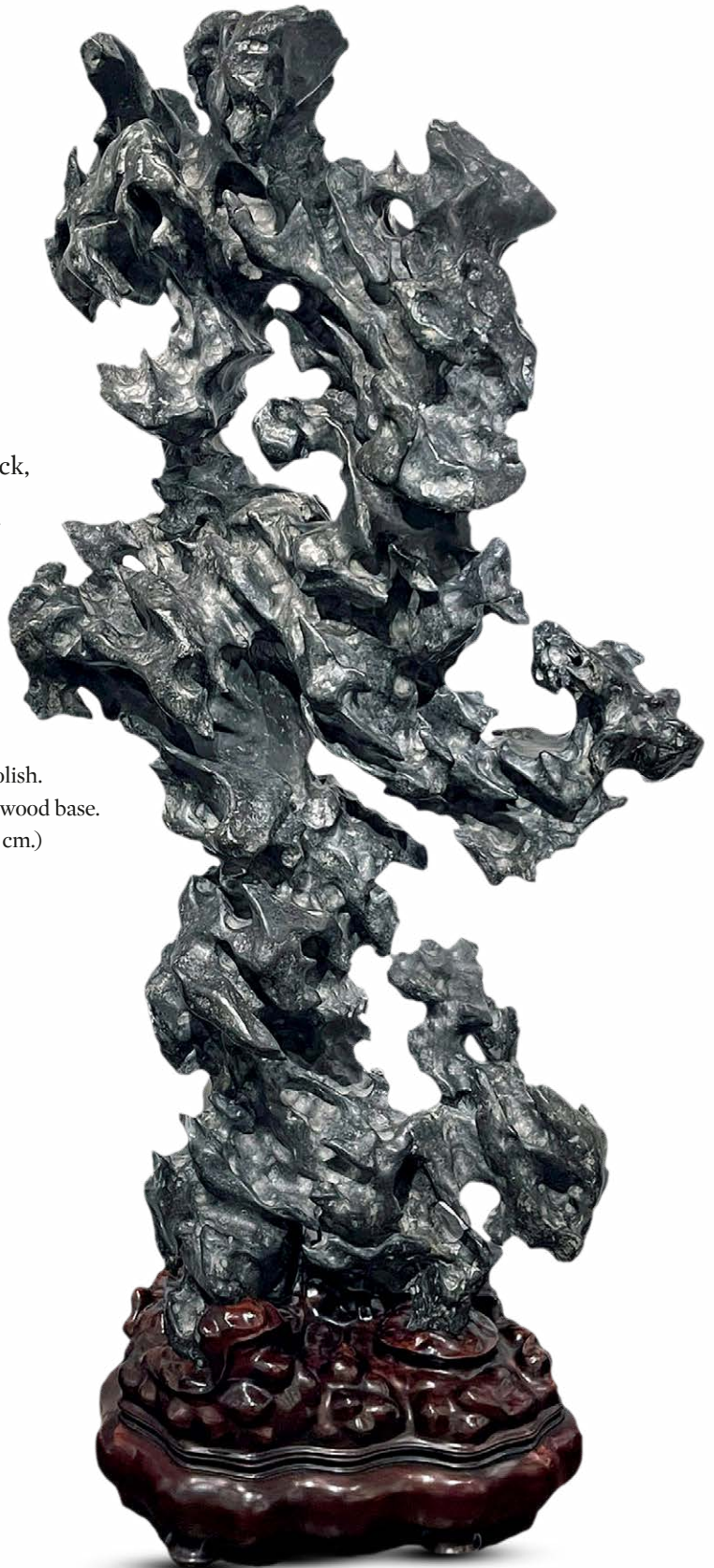
Prior in a Dutch Collection.
An almost identical pair was
in the W.J. Holt Collection, England,
described and illustrated by
Rackam, *Chinese Ceramics in
Private Collections*, 1931, p. 145, Fig.
256. Another larger sized pair was
in the Leonard Gow Collection,
Scotland, early 1900s.



11

12. Large Chinese Scholar's Rock,
Lingbi Type

Of characteristic dark gray color and of extraordinary form. The stone is of tall size with remarkable overhangings. The surface is highly contoured with numerous openings. The shape is abstract but perhaps suggests a dragon in clouds. The stone of mostly uniform medium/dark gray tone and with a soft polish. Mounted upon a custom carved wood base. Height with base: 47 inches (119 cm.)





13

13. Fine Chinese Famille Verte Porcelain Jardinière

KANGXI PERIOD, AD 1662-1722

Decorated with large-scale lotus flowers, aquatic plants, cranes, Mandarin ducks, and other birds. All very finely painted in bright enamel colors.

Height: 12 ¾ inches (32 cm.)

Diameter: 14 ½ inches (36.5 cm.)

Ex: Private American Collection

14. Pair of Chinese Famille Verte Porcelain Plates

KANGXI PERIOD, AD 1662-1722

Of broad rounded form with molded sides.

Decorated in the center with Fu Lions and cubs symbolic of a Happy Family, interestingly done in mirror image. With bird and flower reserves around the center. All finely painted in bright enamels.

Diameter: 14 inches (35.5 cm.)

Ex: Important American Collection

Prior: British noble collection



14



15

15. Rare Pair of Chinese Aubergine Ground Famille Verre Pear-Shaped
“Tassel” Vases

KANGXI PERIOD, AD 1662-1722

Decorated with alternating archaic vases on stands and hanging baskets that are ornamented with elaborate tassels.

Heights: 11 ½ and 12 inches (31 cm.)

Ex: Private American Collection (one acquired through our gallery almost 25 years ago; the other acquired in England a few years later).

Note: Vases of this type are known in blue and white and more rarely in famille verte. It is very rare to encounter examples with colored grounds.

The only other recorded examples with aubergine grounds that we are aware of is a pair illustrated in *Chinese Porcelain and Hard Stones* by Gorer and Blacker, 1911, Volume II, Pl. 192.

With wood bases.



16

16. Rare Pair of Chinese Reverse Glass Paintings

CA: LATE 18TH/ EARLY 19TH CENTURY

Each depicting Indian Figures. All finely painted and very rare in subject.

Framed: 12 x 15 inches (30.5 x 38 cm.)

In gilded frames probably of the period.

Ex: Private American Collection

Ex: English Collection

17. Chinese Carved Rock Crystal Figure of Shoulao

MID-19TH CENTURY

Finely carved from a single piece of clear and slightly smokey quartz crystal. Posed standing and holding a branch of peaches over his shoulder. With fine detailing to his features and decoration to his robe.

Height: 8 1/8 inches (20.6 cm.)

Mounted on a carved wood base.

Ex: European Collection (acquired in the Far East in the early 1900's)

This is a rare subject to find in rock crystal. A similar example is in the Taft Museum, Cincinnati- that was acquired from Duveen Bros. in the early 1900's.

Another similar example from the Imperial Collection is in the National Palace Museum, Taiwan.



17