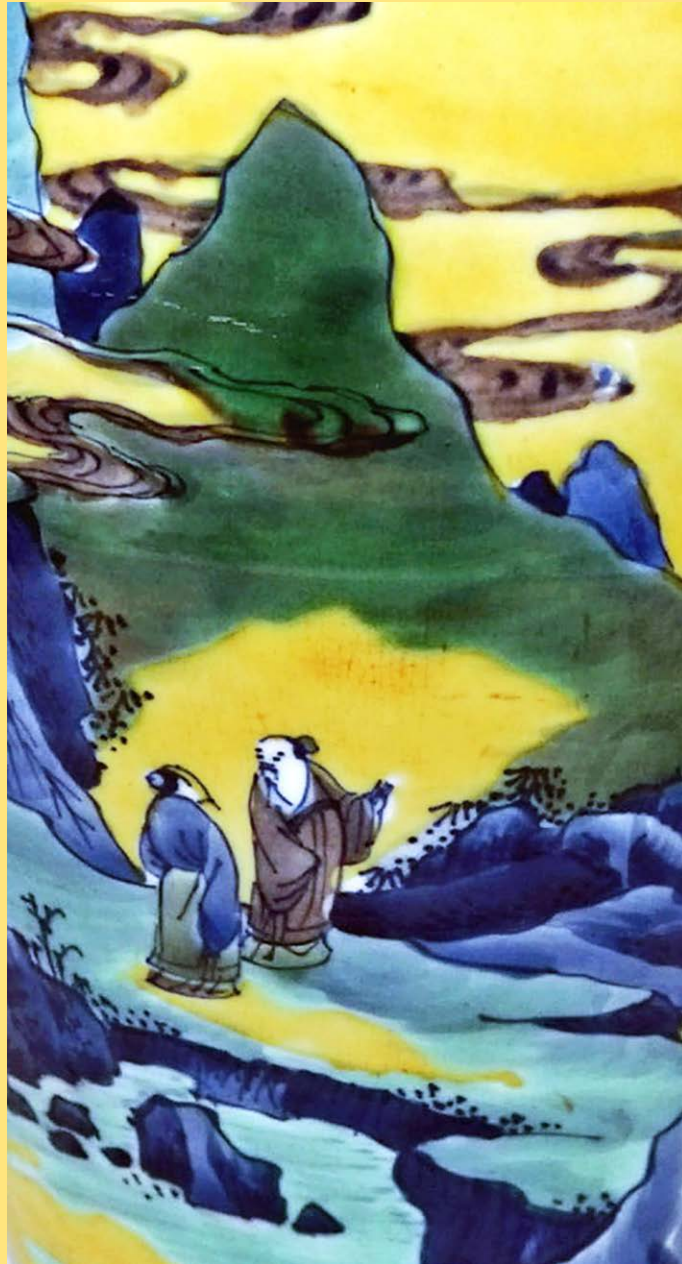


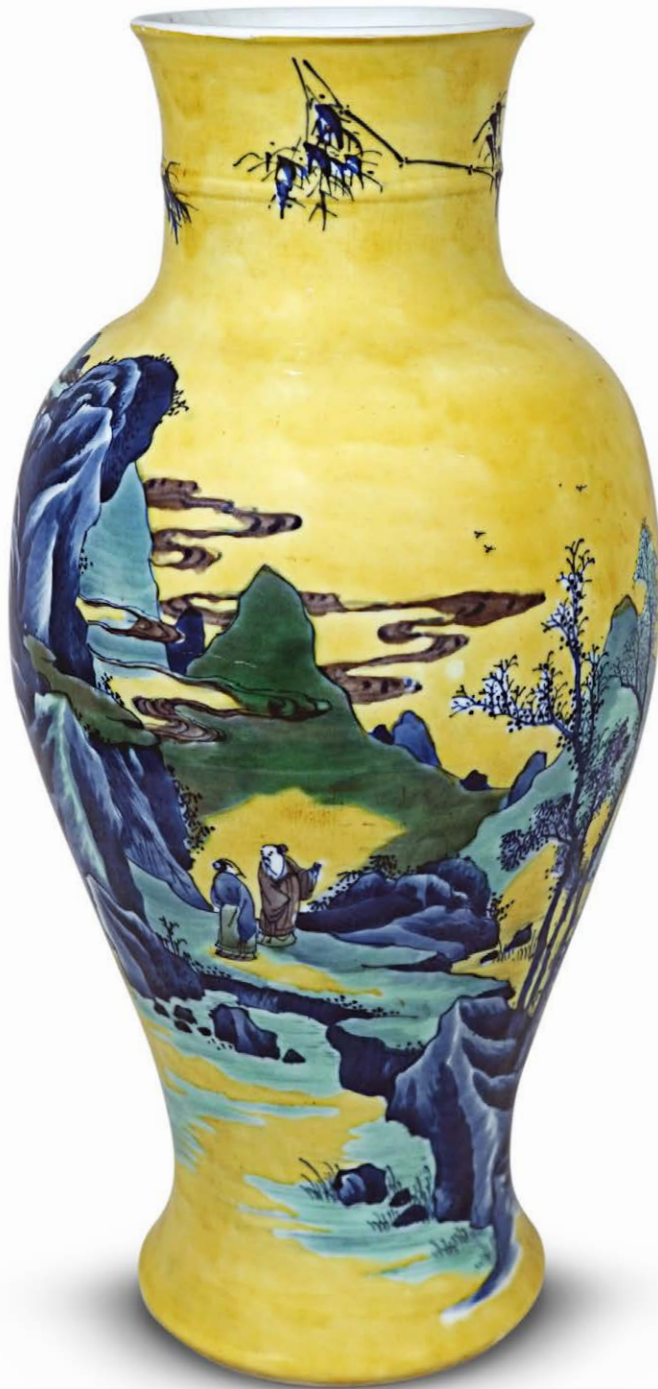
Ralph M. Chait Galleries INC.

CHINESE ART

ESTABLISHED 1910



SPRING 2024



1

1. Rare Chinese Underglaze Blue and Yellow Ground Porcelain Vase

KANGXI PERIOD,
CA: LATE 17TH CENTURY

Finely decorated with scholars in a beautiful mountainous land and riverscape. Painted in a very rare combination of colors including green and aubergine.

Height: 15 ¼ inches (40.1 cm.)

Ex: Private American Collection acquired 35 years ago through our gallery; prior in another American collection

Vases with this type of decoration are extremely rare. Another almost identical example with a related bottle-shaped vase is in the Victoria & Albert Museum (Salting Collection), London. Another almost identical example is in a private American Collection.



Cover:

See No. 1 for both and full information.

Asia Week and Spring 2024

We are very pleased to present in this Asia Week Spring Exhibition an extraordinary group of fine Chinese porcelains and works of art. In this auspicious Year of the Dragon, we are particularly honored to include two very important examples in Kangxi Imperial Yellow porcelains: a fine pair of Yellow Bowls (No. 2) and an extraordinary Handled Dragon Cup (No. 3).

The Bowls are of exquisite form, thinly potted, and beautifully decorated overall in the restricted Imperial Yellow color. They have been in a private American Collection for over 30 years.

The Dragon Cup is extremely fine and rare and is one of literally a handful of this type known. It is glazed inside and out in yellow, and decorated with two incised rampant Five-Clawed Dragons chasing Flaming Pearls. Its mark is finely and skillfully painted in remarkable miniature scale.

Cups such as this were reserved for use by the Emperor himself, the Empress, and Dowager Empress alone. We are aware of only three others: one in the Percival David Collection, and two other that were sold in the last few years in New York and London. There appear to be none published that have survived in the Imperial Collections in China. This Cup was purchased in the early 1900s in New York or London by an American collector and passed down through the family until this time.

We are further pleased to include in this exhibition a remarkable Iron Figure of a Bodhisattva from an important early 20th century French Collection; addition porcelains of rare type and beautiful decoration, and other superlative examples of Chinese decorative arts spanning two millennia. We welcome your inquiries and look forward to welcoming many of you at our gallery during this exhibition or when your travels bring you to New York.

Steven and Andrew Chait



No. 2 and 3, see next page



2

2. Fine Pair of Chinese Imperial Yellow Porcelain Bowls

KANGXI MARK AND PERIOD, AD 1662-1722

Finely and very thinly potted. The interior and exteriors, glazed in a sublime rich and pale yellow tone that was reserved for the Emperor.

Diameter: 4 ½ inches (12 cm.)

Ex: Private American Collection (acquired from Sotheby's Hong Kong, May 15, 1990, Lot. 58)

With fitted box.

A very similar pair is in the Sir Percival David Collection, London now at the British Museum. Another pair of this size from the T.Y. Chao Collection was exhibited at the Hong Kong Museum of Art, 1978, No. 45. A slightly larger bowl was exhibited at the Hong Kong Museum of Art, *The Wonders of the Potter's Palette*, 1984, No. 37. Another was in the Wang Xing Lou Collection, *Imperial Perfection, The Palace Porcelain of the Three Chinese Emperors*, 2004, No. 92; and other examples are in the Baur Collection, Geneva and Meiyintang Collection.





3

3. Extremely Fine and Rare Chinese Imperial Yellow Handled Cup

KANGXI MARK AND PERIOD, AD 1662-1722

Thinly and most delicately potted, and with two elegant and simple crescent handles. Incised front and back with a rampant Imperial Five-Clawed Dragon chasing a flaming pearl. Glazed inside and out in a sublime pale yellow that was reserved for the Emperor

Diameter with handles: 2 ¾ inches (7 cm.)

With a collection number label (likely from an exhibition) affixed to one side.

Ex: Private New England American Family Collection, acquired in the early 1900's likely in London or New York, and then descended in the family.

Cups of this type with incised Imperial Dragons are of particular note and extremely rare. We are aware of only three others: One is in the Percival David Collection, now in the British Museum, London, published in Margaret Medley, *Illustrated Catalogue of Ming and Ch'ing Monochrome in the Percival David Foundation of Chinese Art*, Section 6, London, 1973, No. A593.

The second, from the Marcus Ezekial Collection acquired from Yamanaka London was sold at Sotheby's London on November 3, 2021, Lot 6.

And the third, from the collections of Henry M. Knight and T. Y. Chao was sold at Sotheby's New York, September 22, 2020, Lot 101. The Ezekial example was purchased around the same time as this Cup and a Yamanaka provenance is a possibility but cannot be confirmed.

Another in yellow with the variant design is in the Shanghai Museum.





4

4. Chinese Glazed Pottery Vase

HAN DYNASTY,
CA: 1ST CENTURY AD

Of tall cylindrical form with wide Bowl-form mouth. Glazed overall in an attractive oxidized green glaze.

Height: 17 ¾ inches (45 cm.)

Ex: Private American Collection
(acquired from Spink, London, 1986).

5. Pair of Chinese Pottery Figures of Acrobats

HAN DYNASTY, CA: 1ST CENTURY AD

Masterfully modelled in motion, with legs and arms in gymnastic poses; their faces with determined expressions.

Retaining vestiges of slip decoration.

Height of figures: 5 ½ inches (14 cm.)

Height with base: 6 ½ inches (16.5 cm.)

Length with base: 8 ½ inches (21.6 cm.)

Creatively mounted on a stand with parallel bars that captures their spirit and motion.



5



6

6. Fine Pair of Chinese Unglazed Pottery Dancers

HAN DYNASTY, CA: 2ND CENTURY BC

Each posed in mid-step and partially bent in dance pose with arms extended to dramatic effect. Their faces are stylized but have real charm and amusing personality. They are enjoyable from any angle and present a striking and pleasing interaction between them.

Height: 13 ¼ inches (34 cm.)

TL tested.

Ex: American Collection, 1990s.

Dancing figures of this type are rare and very prized. A similar example with a sleeve tossed over her shoulder is in the Metropolitan Museum of Art (Weber collection); examples in China include a figure from Baijankou, Xian, Shaanxi province now in the China Museum of History, Beijing and illustrated in *The Great Treasury of Chinese Fine Arts: Sculpture of the Qin and Han Dynasties*, pl. 6

7. Chinese Unglazed Pottery Figure of a Walking Horse

TANG DYNASTY, CA: 7TH CENTURY

Finely modelled in the full round. The Horse is of beautiful form and proportion; his head raised in alert pose with ears perked. With fine detail to features and characteristic aperture along the neck and posterior for the insertion of horse hair to form the mane and tail, a characteristic of pottery horses of the early Tang dynasty.

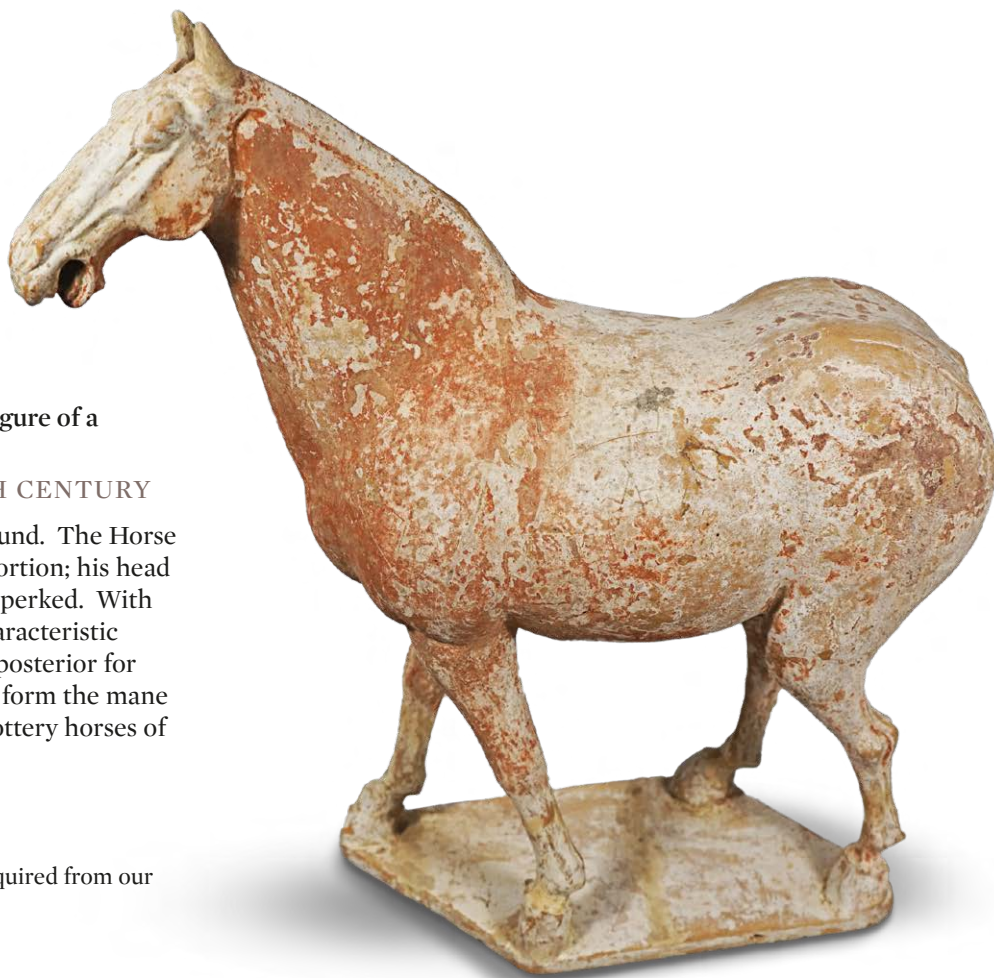
Height: 18 ½ inches (47 cm.)

Length: 16 inches (40.5 cm.)

Ex: New England Collection (acquired from our gallery in the mid-1990's)

Prior in an American Collection.

TL tested.



7

8. Rare and Important Large Chinese Iron Figure of a Bodhisattva

YUAN/ EARLY MING DYNASTY,
CA: 14TH/ 15TH CENTURY

Finely modelled in the full round and posed in an attitude of Royal Ease, her right hand extended over her knee. She wears a long robe, crown, and beaded necklace. The face displays fine details and expression. The figure retains vestiges of polychrome decoration.

The reverse side with a partial inscription of two characters reading Wen Cun.

Height: 34 ¾ inches (88 cm.)

Height with base: 39 inches (99 cm.)

With fitted wood base.

Ex: Private American Collection to the present
Acquired from Jacques Barrere, Paris in the mid-1980's

Exhibited: Barrere exhibition, November, 1985

Ex Collection: Armand Trampitsch, France (1890-1975)

Full sculptures made from iron are extremely rare to have survived antiquity. Best known examples are Ming dynasty Bodhisattva heads and occasionally torsos, and examples may be found in several Western collections. The earliest example to our knowledge of a full figure is a Bodhisattva seated on a lion, dated 1222 (Song dynasty) in Henan Province that is illustrated by Matsubara, *Chinese Buddhist Sculpture*, 1966, 303A.



9. Pair of Chinese Cizhou Glazed Double Gourd Vases

CA: 17TH/ EARLY 18TH CENTURY

Of fine form. One decorated with flowers; the other with a tiger on the lower lobe, and with poem on the reverse reading:

雲霞氣落遲
酒壯英雄胆
清茶君子心

The rose-colored clouds linger in the sky.

The wine makes us bold like the heroes of old.

And the plain green tea restores our gentlemanly composure.

Height: 12 ¾ inches (32.4 cm.)

Ex: French Collection

A similar example of the floral example is in the Victoria and Albert Museum, London



10. Chinese Scholar's Rock, Ying Type

Of remarkable horizontal form resembling a dragon. Of striated form with characteristic dimpled surface and light gray color.

Length: 22 inches (56 cm.)

Height: 10 ¾ inches (27.4 cm.)

Mounted on a fitted wood base.

Ex: American Collection, acquired from our Gallery in the 1980's.

Prior in a New England Collection





11

11. Rare Large Chinese Wucai Glazed Porcelain Vase and Cover

SHUNZHI PERIOD, CA: 1644-1661

Finely decorated with a large overall scene from the *Shiji* (*Records of the Grand Historian*) by Sima Qian (145-90 BC). The story takes place during the Shang dynasty during the reign of King Wu Ding. The King had a dream about a man the Heavens would send him for assistance. When he awoke he had a court artist create a painting with a likeness of the man, and then set in search for him throughout the Kingdom. He was found near a mill. This is depicted in this decoration with the man Fu Yue standing in front of the scroll with his likeness in the presence of the King

Height: 20 ½ inches (52 cm.)

Large vases with narratives are very rare. Another similarly sized vase (without cover) that includes this story is in the Butler Collection and illustrated and described: by Canepa and Butler: *Leaping the Dragon Gate, The Sir Michael Butler Collection of Seventeenth-Century Chinese Porcelain*, 2021, Fig. III.3.87a-d, Inv. 1569.



12

12. Pair of Chinese Famille Verte Porcelain Plates

KANGXI PERIOD,
AD 1662-1722

Of broad saucer shape. Beautifully decorated with a large central reserve with two peacocks and flowers, set against a varying reserve ground and with wide borders of prunus in rouge de fer and white. The decoration is symbolic to convey: "May you gain Culture, Wealth, and Honor:"

Of particularly fine quality.

Diameter: 15 ¼ (39 cm.)

Almost identical examples: Rijksmuseum (Drucker-Fraser Collection), Gow, and Conde Collections.

13 Chinese Verte Glazed Biscuit Porcelain Figure of The Daoist Immortal Fuxing

KANGXI PERIOD,
AD 1662-1722

Finely modeled in the full round and posed standing with one foot forward and holding a tray that supports a young boy. Dressed in an elaborate long robe tied at the waist and peaked hat. Fuxing was one of the Daoist Star gods, and in this example is meant to convey good fortune and wish for sons.

Height: 9 inches (22.8 cm.)

Similar examples in varying guises: George Davies Collection, a private American Collection, Metropolitan Museum, of Art, and two in the Philadelphia Museum of Art (Caspary/ Gow Collection).



13

14. Chinese Blue and White
Porcelain Rouleau Vase

KANGXI PERIOD,
AD 1662-1722

Finely decorated in deep and varied underglaze blue with a scene from the *Romance of the Three Kingdoms*, "Cao Feasts on the Sparrow Table." During this scene, the Commander Cao gathered civil and military figures for a banquet. Part of the festivities was a competition to shoot with an arrow a red brocaded jacket that was hung in a willow tree. The sixth contender, Xu Huang vowed and succeeded to win the robe. This scene is depicted here on this vase in great detail with the finest artistry.

Height: 17 ½ inches (44.5 cm.)

Ex: Private American Collection
(acquired in the early 1980's.

Almost identical examples also with touches of underglaze red are in the Shanghai Museum, Beijing (*First Selection of Qing Dynasty Porcelain from the Palace Museum Collection, Qing Shunzhi and Kangxi Blue and White Porcelain*, 2004, No. 294) and the Shanghai Museum (Higuchi and Hasebe, 1991, Vol. 3, No. 134).





15

15. Chinese Blue and White Soft Paste Porcelain Jar

CA: EARLY/ MID -18TH CENTURY

Finely decorated with the *Sanduo* (Three Sacred Fruit), finely painted in early Ming style with heap and piled effect of the blue.

Height: 7 ¾ inches (19.7 cm.)

Related examples are in the Palace Museum, Beijing.

Ex: Private American Collection, said to have been acquired from Dreicer-Gorer in the early 1900's and then descended in the family.

16. Unusual Chinese Apple Green Glazed Porcelain Handled Coupe

CA: 18TH / EARLY 19TH CENTURY

Glazed on the exterior and underfoot in a deep apple green with characteristic crackle; the interior in a similar cracked grayish tinged tone. Of fine quality and an unusual shape. Based upon a Song dynasty form.

Height: 4 ¾ inches (11.7 cm.)

Diameter of Mouth: 5 inches (12.7 cm.)

Ex: Private American Collection (acquired from our Gallery almost 50 years ago)

Ex Collection: Harry Payne Bingham

Ex Collection: Oliver H. Payne (1839-1917)

Ex: Duveen Bros. Exhibited on loan to the Metropolitan Museum of Art, early 20th century

Exhibited on loan to the Metropolitan Museum of Art, early 20th century



16

17. Chinese Turquoise Glazed Porcelain Double Gourd Shaped Vase

QIANLONG PERIOD, AD 1736-1795

With contracted waist and fine flowing curved form. Glazed overall in a beautiful and deep turquoise blue. The underfoot is left unglazed.

Height: 8 ½ inches (22.5 cm.)

An almost identical example previously with our gallery was in the collection of Walter Bareiss (and prior in the collection of Samuel T. Peters) and was exhibited at Metropolitan Museum of Art, in the early 20th century.



17

18. Pair of Chinese Export Porcelain Potpourri Jars and Covers

CA: MID-18TH CENTURY

Based on a European form, finely decorated with Court Ladies and flowers. All finely painted in bright rose verte enamels.

Height: 8 inches

Ex: Private American Collection



18



19

19. Fine Chinese Rose Verte Porcelain Charger
YONGZHENG PERIOD, AD 1723-1735

Of impressive size. Decorated with a large central scene from a historic tale or romance, depicting the departure of a gentleman from a palace and bidding farewell to his lady love, who sits on a terrace above. The flanged border with reserves of the famed Tang dynasty poet Li Bo in different vignettes. All very finely and exuberantly painted in bright enamels. Of rare size and superb quality.

Diameter: 21 inches (54 cm.)

Ex: Private American Collection



20

20. Rare Chinese Junyao-Type Glazed Moonflask *Bianhu*

CA: 18TH/ EARLY 19TH CENTURY

With abstract glazed decoration in variegated crimson shades against a greenish blue ground. The form is based upon an early Ming type; the glaze, a revival of the classic Song and Ming Junyao. It is rare to encounter this form with this type of glaze.

With an old unidentified collector label to the underfoot.

Height: 12 inches (30 cm.)

Ex: European Collection (acquired from our gallery, and prior in an American collection).

21. Fine Chinese Deep Red Flambé Glazed Vase

CA: MID-18TH CENTURY/
EARLY 19TH CENTURY

Of beautiful form. Decorated overall with a superb uniform deep red glaze of remarkable depth of color and displaying the very subtle flecks of slight purplish tone that compose its fine flambé color. This flambé glaze was based upon a Song dynasty prototype known as Junyao. It was reinvented in the Qing dynasty during the 18th century.

Height: 8 inches (20.2 cm.)

Ex: European Collection (acquired from our gallery, early 2000's)

Ex: Private American New England Collection



21



22

**22. Fine Chinese Yixing Pottery Teapot
KANGXI PERIOD, AD 1662-1722**

Of realistic bamboo form with spotted decoration in imitation of the markings on the stalks.

All very finely and precisely fashioned in an elegant manner.

Height: 4 ¾ inches (12.2 cm.)

Ex: Private European Collection

A virtually identical example from the historic collection of Augustus the Strong (1670-1733), Elector of Saxony and King of Poland, is in the Zwinger Museum, Dresden.

23. Rare Pair of Chinese Famille Noire Porcelain Beaker Vases

KANGXI, CA: LATE 17TH CENTURY

Decorated with pheasants on rockery amidst flowering trees and plants. All finely painted in bright enamels against a black ground.

Height: 17 inches (43.2 cm.)

With base: 19 ¼ inches (49 cm.)

Ex Collection: John D. Rockefeller, Jr.

Acquired from Parish Watson and Frank Partridge, New York and London, 1927

Ex Collection: Herbert Stern, First Baron Michelham (1851-1919)

Ex: Collection: Prince de Bearn (1887) with label to the underfoot with date.

Mounted upon custom carved and fitted "Rockefeller" wood bases.

Exhibited: *Chinese Black Hawthorn Porcelains*, Arkansas Arts Center, Little Rock, 1963, No. 6.

A complementary vase and cover with this decoration is in the Victoria & Albert Museum (Salting Collection) and was the first object of Chinese porcelain that Salting acquired from Mr. Lindo Myers in 1869 or 1870, who acquired it in Paris.



Another very similar beaker vase from the Benjamin Altman Collection is in the Metropolitan Museum of Art.

NOTE: Famille noire porcelains were among the most prized and costly Chinese decorative art in the West in the late 19th and early 20th centuries. Reflecting this, it was posited by Pope and others in the 1970s that many (or even all) of the large examples were 19th century pieces or redecorated Kangxi vases, all made or adjusted to meet the market demand of that time.

More recent scholarship has re-examined and challenged this blanket dismissal. This is based upon decorative styles, historic records, and established old provenances of some pieces to the latter 1800's such as these that predate the collecting craze and exuberant prices.

See: Accompanying photograph of John D. Rockefeller's home at 10 West 54th Street from 1936 showing the vases on a mantel.



23

24. Chinese Famille Verte
Porcelain Plate

KANGXI PERIOD,
AD 1662-1722

Decorated with a beautiful
central reserve filled with
flowering plants and butterflies,
then repeated on the flanged
rim. All exuberantly painted in
bright enamels.

A rare type of decoration and
unusual in this size.

Diameter: 14 ¼ inches (36 cm.)

Ex: European Collection

A very similar example from the
Russian Imperial Collection is
in the Hermitage Museum, St.
Petersburg



24



25

25. Pair of Chinese Sancai Glazed Biscuit
Porcelain Parrots

KANGXI PERIOD,
CA: EARLY 18TH CENTURY

Modelled in the full round, with fine detailing
to features and feathers. Decorated overall in
a deep and vibrant sancai (three-color) glaze;
the beaks and claws left *en-biscuit*.

Height: 6 ¾ inches (17 cm.)

Ex: Parisian Collection



26

26. Pair of Chinese Carved Jadeite *Hu* Vases and Covers
19TH CENTURY

With carved decoration on each in a combination of archaistic style and full-faced Dragons amid cloud and flame scrolls. The jade is of pleasing white and light apple green color.

Height: 11 $\frac{5}{8}$ inches (29.5 cm.)

Height with stands: 13 $\frac{5}{8}$ inches (34.5 cm.)

Ex: Important Private American Collection, acquired from the renowned dealer Edgar Gorner (England) in the early 1900s (then, descended in the family).

Illustrated and described: *Chinese Porcelain and Hard Stones*, Gorner and Blacker, 1911, Volume 2, Plate 238.

With period carved wood bases.



27



28

27. Pair of Chinese Carved Spinach Green Jade Cats

19TH/ EARLY 20TH CENTURY

Of very unusual type and forming a true pair. Each well carved and with kittens climbing on their backs. It is very rare to find this subject with cats rather than fu lions.

Length: 6 inches (15 cm.)

Ex Collection: William Goadby Loew and his wife Florence Baker Loew (financier and collector from the early 1900's); then descended in the family.

With finely carved wood bases.

28. Rare and Unusual Turquoise Ground Bottle Shaped Porcelain Vase

QIANLONG MARK, BUT LIKELY EARLY-MID 19TH CENTURY

Height: 12 inches (30.5 cm.)

Decorated in relief with varying flowers and tendrils, and with lappet designs at the foot. All finely painted in bright *falangcai* enamels. The style of decoration is very unusual and seems based upon enamel; the painting is much in the style of that found on bowls and vases from the Kangxi period onward that were

made at the Palace workshops. Vases with molded decoration are also known from the Qianlong period, with examples of varying form in the Baur Collection, Geneva; Meiyintang Collection, Switzerland; and the Chinese Court collections.

Ex: Important Private American Collection, Philadelphia, acquired in the early 1900's and then descended in the family.



29

29. Fine Pair of Chinese Export Silver Handled Dishes

CA: LAST QUARTER 19TH CENTURY

Of quatrefoil form with small handles on either end. Decorated in remarkable, intricate openwork with dragons and flowers. Of particularly fine quality and a rare type.

Marks: WH 90 and ideogram (for Wang Hing)

Size: 13 x 9 ¼ inches (33 x 23.2 cm.)

30. Pair of Chinese Famille Verte Porcelain Boxes

KANGXI PERIOD, AD 1662-1722

Decorated with varying floral reserves and diaper bands in striking design.

Height: 4 ½ inches (11 cm.)

Identical examples from the historic collection of Augustus the Strong (1670-1733) are in the Zwinger Museum, Dresden.



30



31

31. Very Rare Pair of Chinese Mirror Black and Rouge De Fer Porcelain Triple Gourd Vases

KANGXI PERIOD, CA: EARLY- 18TH CENTURY

Of beautiful form. Decorated on the upper and lower bulbs with gilt reserves of flowers against the mirror black ground; the central bulb with flowering plants in rouge de fer. A very rare type. Related examples are in the Zwinger Museum, Dresden from the historic collection of Augustus the Strong, Elector of Saxony and King of Poland (1670-1733).

Height: 10 ¼ inches (26 cm.)

Ex: New England Collection since the early 1980s (acquired from our Gallery)

Ex: Mary Kosinski-Weir Collection (acquired from our Gallery in the 1960's)

Prior: Dutch Collection



32. Chinese Famille Verte Glazed Biscuit Porcelain Figure of a Seated Woman

KANGXI PERIOD, CA: 1700.

Very finely modelled in the full round and posed seated with one knee bent and holding a long handled cup. With fine detailing to features and hair. Dressed in a yellow ground skirt and aubergine robe with shaped reserves with landscape, butterfly, floral, and Precious Antique decorations, all exquisitely painted in fine detail. A very fine and rare type.

Height: 7 1/8 inches (18 cm.)

Ex: New England Collection (acquired from our gallery in the 1960's)

Prior: Helen Charters Collection, England

32

33. Pair of Chinese Sancai Glazed Porcelain Playing Fu Lions

KANGXI PERIOD, AD 1662-1722

Forming a true pair and one of the rarest and amusing models of this subject. Each is posed on his back and playing with a brocaded ball with all four feet. An opening at the top of each ball is meant for a tapir or incense. Their faces are turned towards viewer for added spirited engagement. All finely modelled, with movable eyes, and the glaze colors of bright and deep tone.

Height: 4 3/4 inches (12 cm.)

Another pair formerly with our gallery emanated from the collection of Heber Bishop and are now in a private collection.



33

34. Very Rare Chinese Sancai Glazed Biscuit Group of Guanyin

KANGXI PERIOD, CA: LATE
17TH CENTURY

The Guanyin of rare model is posed holding a boy in her left arm as she stands upon the head of a Dragon taking her across a sea of swirling waves.

Height: 13 inches (33 cm.)

Almost identical groupings: von Klemperer Collection, Germany, and Anthony de Rothschild Collection, England (illustrated and described by Kraahl, *Chinese Ceramics, The Anthony de Rothschild Collection*, 1996, Vol. 2, Pl. 215.)





35

35. Very Rare and Fine Blanc de Chine Porcelain Tree with Figures

CA: LATE 18TH/ EARLY 19TH CENTURY

Meticulously modeled with branches and leaves; with removable seated Sage at one side; and a Child with large bird and deer on the other. The rock revealing a hidden animal form of a lion. A remarkable work, masterfully crafted.

Height: 22 inches (55.8 cm.)

Ex: Private American Collection

Ex: Collection: J.T. Dorrance, US



36

36. Pair of Chinese Famille Rose Porcelain Plates
YONGZHENG PERIOD, AD 1723-1735

Decorated with an Immortal Lady riding upon a mythical animal, and standing attendants. All finely painted in bright enamels.

Diameter: 9 inches (22.8 cm.)

An almost identical pair is illustrated by Williamson in *The Book of Famille Rose*, 1927.

37. Chinese Export Armorial Porcelain Basket and Underdish

CIRCA 1767

Decorated with the Arms of Van Tets, Holland. Of complex open work design with flower decoration.

Height: 3 inches (7.5 cm.)

Length: 8 ½ inches (21.5 cm.)

Ex Collection: Mary Brewster, US.



37



38

38. Chinese Export Silver Epergne

CA: LATE 19TH/ EARLY 20TH CENTURY

Consisting of a tall central trumpet-form receptacle, surrounded by three additional ones of slightly smaller size. Each decorated with four-clawed dragons in deep repousse and with fine chasing. The central dragon on the large central holder is posed upright and claspng the effulgent pearl in one of its clawed legs. This is very unusual, as the pearl is often otherwise shown slightly out of reach.

Height: 13 inches (33 cm.)

39. Fine Chinese Famille Rose Porcelain Cup and Saucer

YONGZHENG PERIOD, AD 1723-1735

Superbly decorated with Precious Antiques, all finely painted in great detail and with particular vibrancy.

Diameter of saucer: 4 ½ inches (11.4 cm.)

Height of cup: 1 ½ inches (4 cm.)



39

40

40. Rare Chinese Export Engraved Porcelain Cup and Saucer

KANGXI PERIOD, AD 1662-1722

Decorated in the interiors with floral designs in underglaze blue; the exterior of each with a cappuccine monochrome glaze that has been engraved in Europe [ironically] in Chinese style with boys and flowers. These types of engravings are unusual and believed to have been done in Bohemia by glassworkers.

Similar and related examples: the historic collection of Augustus the Strong now in the Zwinger Museum, Dresden and the Peabody Essex Museum, Salem.

Diameter of saucer: 4 ½ inches (11.5 cm.)



41

41. Large Japanese Imari Porcelain Charger

LATE 17TH/ EARLY 18TH CENTURY

Of broad rounded form with flanged rim. Beautifully decorated with Japanese ladies standing between screens and flower carts, all finely painted in vibrant enamels and gilt. The reverse side with chrysanthemum sprays, prunus, and peonies. A beautiful and striking decoration, and of impressive size.

Diameter: 21 ¾ inches (55 cm.)

Ex: Private European Collection

Ex Collection: Augustus the Strong, Elector of Saxony and King of Poland (1670-1733)

With incised Dresden "Johanneum" inventory mark to the underfoot: N 149 with cipher



42



**42. Pair of Chinese Famille Rose
Openwork Porcelain Vases**

MID-18TH CENTURY

Of tapered hexagonal form with everted neck. The solid inner core encased in openwork sides with complex honeycomb decoration and varied-shaped central vase and flower shaped reserves with court ladies in palace interiors. All finely painted in great detail.

Height: 14 ¾ inches (37.5 cm)

**43. Pair of Chinese Reverse Glass
Paintings**

CA: SECOND HALF 18TH
CENTURY

Depicting related scenes of a
couple, one in Winter and one in
Summer. The scene takes place at
night.

This is a rare subject and unusual
in these seemingly moonlit color
tones.

With Chinese frames.

Size: 6 ¾ x 9 inches (17.2 x 22.8 cm)

Ex: English Collection



43



44

44. Pair of Blanc de Chine Porcelain Figures of Guanyin
LATE QING/EARLY REPUBLIC PERIOD,
LATE 19TH / EARLY 20TH CENTURY

Each with impressed *Xu Yunlin* and *Xu Yuyuan* marks,

Each finely modelled in the full round; the Guanyin seated upon a lotus throne.
All superbly detailed with meticulous embellishments.

Height: 13 inches (33 cm.)

Ex: American Collection



RALPH M. CHAIT GALLERIES INC.

16 East 52nd Street
10th Floor
New York, NY 10022

Tel: 212-397-2818

info@rmchaitgal.net
www.rmchait.com