

Ralph M. Chait Galleries INC.



WINTER 2023

Winter 2023

Season's Greetings! We are delighted to present our annual Winter Booklet that is filled with a variety of beautiful Chinese porcelains and works of art.

Some of the objects you will see were with our gallery many decades back. Others have notable provenance and history as well.

In January, we will be exhibiting at The Winter (Antiques) Show in New York that celebrates its 70th Anniversary. Our Gallery is one of the longest exhibiting dealers at the Show. The Winter Show is an important part of our history and filled with fond memories and wonderful objects over these many years.

We invite your inquiries on any or more of the objects in this booklet, and as always, welcome your visit if you are in New York, or your telephone call or email as well!

Wishing everyone much happiness for the Holidays and a very Happy 2024!

Steven and Andrew Chait



FRONT COVER

1. Superb Ormolu Mounted Chinese Flambé Porcelain Vase

QIANLONG PERIOD,
CA: SECOND HALF 18TH
CENTURY.

THE MOUNTS:
EARLY 19TH CENTURY

The Vase with a most beautiful variegated blue glaze with wonderful overall crackle. This type of porcelain was imitating early Jun ware from the Song dynasty- and took it to another level.

The mounts are equally stunning, and with almost identical examples in the British Royal Collection that are described in detail by John Ayers, 2017, Vol. II, Nos. 1289 and 1290. Ayers attributes the mounts to either the British firm of Edward Holmes Baldock or French form of Philippe-Claude Maelrondt, ca: early 19th century. The British examples are in Brighton Pavilion from the George IV reign.

Greatest Height: 23 inches (59 cm.)

Ex: Continental European Collection where it was in a collection since around the mid-1900s.





3

2. Pair of Chinese Pottery Figures of Tumbling Acrobats
HAN DYNASTY, CA: 1ST CENTURY AD

Masterfully modelled in motion, with limbs extended and faces looking towards each other.

Presenting a remarkable combination of abstractness of form but vitality and realism in motion and expression. Retaining vestiges of slip and polychrome decoration.

Length of figures: 4 ½ inches (11.5 cm.)
 Height with base: 6 inches (15.2 cm.)

Ex: Private American Collection

Ingeniously mounted to capture their spirit and motion.

3. Fine Chinese Rose Verte Porcelain Charger
YONGZHENG PERIOD, AD 1723-1735

Of impressive size. Decorated with a large central scene from a historic tale or romance, depicting the departure of a gentleman from a palace and bidding farewell to his lady love, who sits on a terrace above. The flanged border with reserves of the famed Tang dynasty poet Libo in different vignettes. All very finely and exuberantly painted in bright enamels. Of rare size and superb quality.

Diameter: 21 inches (54 cm.)

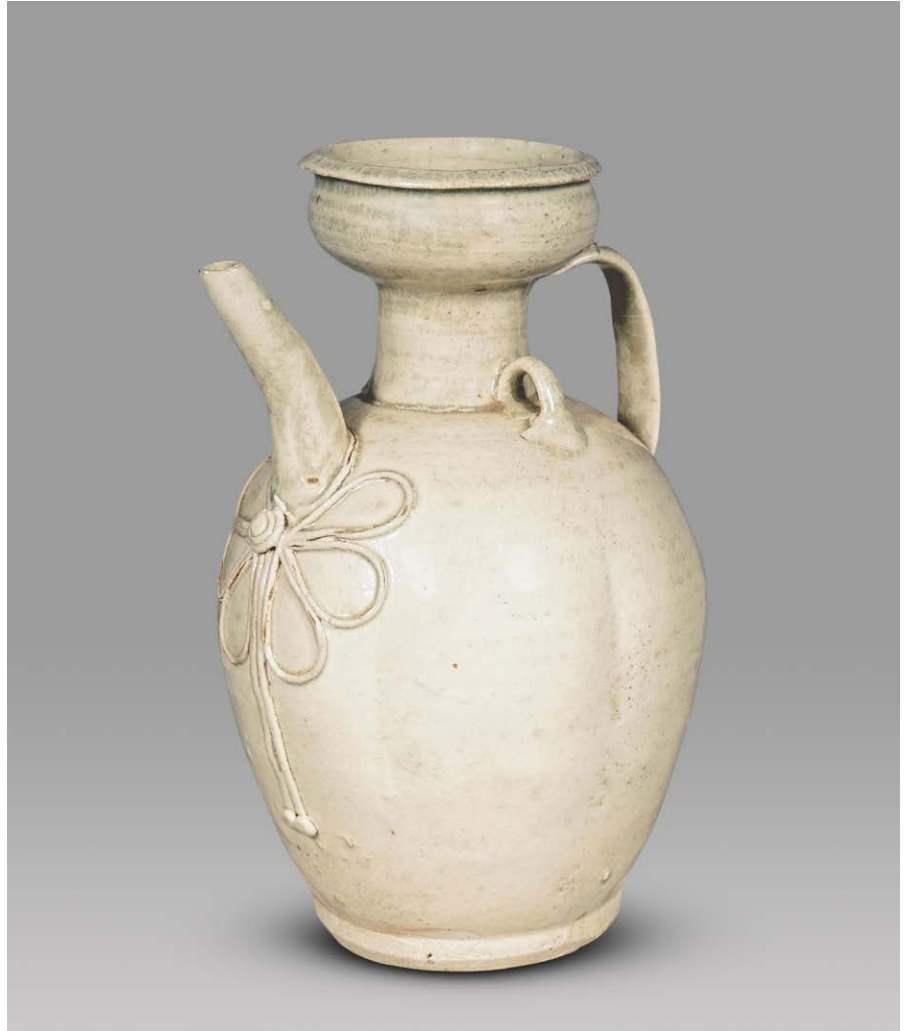
Ex: Private American Collection

4. Chinese White Ware /
Qingbai Ewer with String Design
NORTHERN SONG DYNASTY,
CA: 11TH- 12TH CENTURY

Of elegant form with cup-form mouth, strap handle, and curved everted spout. Decorated with an ornamental floral-shaped knot design beneath the spout. These string design ewers in our view are among the most interesting and even whimsical types from this period.

Height: 8 inches (20.2 cm.)

Provenance: Thomax Collection No. 1648, formed by Prof. Leif Sourander, Abo, in the 1960's-1990s, and exhibited at the Arabia Museum, Helsinki, Finland, September-October, 1994.



4



5

5. Fine Chinese Cizhou Glazed Ribbed Jar with Handles
JIN DYNASTY, 12TH/ 13TH CENTURY

Of fine form. Glazed overall in a beautiful deep brownish/ black glaze with carefully delineated vertical ribs in slip along the exterior. Of particularly fine quality.

Height: 4 ½ inches (11.5 cm.)

Ex: Private American Collection

Ex Collection: Dries Blitz, Holland

A similar example is in the St. Louis Art Museum from the collection of Dr. and Mrs. Sherman Lee, and is illustrated and described by Mowry: *Hare's Fur, Tortoiseshell, and Partridge Feathers*, Harvard, 1995, No. 64. Another very similar but larger-scale example was in the Linyushanren Collection with a notable provenance prior including the Takeji Yamada Collection and Sorimachi Shigesako Collection (and sold at Christie's New York, March 22, 2018, Lot No. 518).



6



6. Fine and Rare Chinese Imperial Blue and White Porcelain Meiping
KANGXI MARK AND PERIOD, CA: LATE 17TH CENTURY

Decorated with a figural scene in an outdoor setting of a woman and youth offering tribute from a treasure chest filled with sycee to an Imperial figure and attendants. The scene, framed with rockery and trees. All finely painted in deep and vibrant underglaze blue.

Height: 10 inches (25.7 cm.)

Ex: Important Private American Collection from the early 1900's (descended through the family)





7

7. Pair of Chinese Famille Rose Porcelain Quadrangular Vases and Stands
YONGZHENG PERIOD, AD 1723-1735

Each decorated with reserves of the Eight Daoist Immortals. All finely painted and set against a flower-strewn yellow background; the neck with *Shou* symbols for Long Life. A very rare example of this type.

Height: 13 ½ inches (34.2 cm.)

Ex: European Collection

8. Chinese Aubergine Glazed Biscuit Porcelain Monkey Ewer

KANGXI PERIOD,
CA: LATE 17TH CENTURY

Posed seated on his back legs and holding a peach that forms the spout of the ewer. The handle is of pine branch form. Glazed overall in a deep brownish-toned aubergine, with touches of yellow and green on the handle. The body of the ewer with incised designs to simulate fur.

Height: 6 ¼ inches (15.5 cm.)

Similar examples: the historic collection of Augustus the Strong; Lady Ward Collection (England, early 1900's); Anthony de Rothschild Collection; Metropolitan Museum of Art (Ex: Mary Clark Thompson Collection, 1923- same color), and *Jie Rui Tang* Collection.



8



9. Rare Chinese Glazed Biscuit Porcelain Ewer

KANGXI PERIOD,
CA: LATE 17TH CENTURY

In the form of a dappled yellow Carp. Of superb quality and extremely rare in being of puzzle/Cadogan form that fills from the bottom, and the leaf "cover" is attached and purely ornamental.

Height: 5 ¾ inches (14 cm.)

Similar examples: Copeland Collection (acquired from our Gallery) now at the Peabody Essex Museum, two in the former Allard Collection, Paris (early 1900s), and others with the famed dealer Yamanaka in the early 1900s.

9



10

10. Chinese Famille Verte Porcelain Vase and Cover
KANGXI PERIOD, EARLY 18TH CENTURY

Finely painted in vibrant enamels with a pheasant posed on rockery, amidst an array of beautiful flowering plants.

Height: 17 ½ inches (44.5 cm.)

11. Chinese Famille Verte Porcelain Plate
KANGXI PERIOD, AD 1662-1722

Decorated with a beautiful central reserve filled with flowering plants and butterflies, then repeated on the flanged rim. All exuberantly painted in bright enamels. A rare type of decoration and unusual in this size.

Diameter: 14 ¼ inches (36 cm.)

Ex: European Collection

A very similar example from the Russian Imperial Collection is in the Hermitage Museum, St. Petersburg.



11



12

12. Fine and Rare Pair of Chinese Verte Glazed Biscuit Porcelain Figures Riding upon Fu Lions
KANGXI PERIOD,
AD 1662-1722

Rare as a true pair, presenting two Asiatics (probably Sogdian as representatives of the overland Silk Road trade). Of superior quality with fine detailing and brightly enamelled.

Height: 6 ¼ inches (16 cm.)

Similar and related examples:
Leonard Gow, Richard Bennett, and Conde collections.



13

13. Pair of Chinese Famille Verte Porcelain Plates

KANGXI PERIOD,
AD 1662-1722

Thinly potted and decorated in bright enamels with a Court Lady at her writing table interacting (and perhaps scolding) her mischievous sons. Finely painted in "Chinese taste" with poems in the background of each.

Diameter: 10 5/8 inches (27 cm.)

Ex: New York Collection- acquired from our Gallery in the late 1980's/early 90's.

Prior in a European Collection.



14



15

14. Rare Chinese Famille Verte Porcelain Bowl

KANGXI PERIOD, AD 1662-1722

Finely decorated with trefoil reserves of flower and tendril decoration, additional prunus flowers, and *Shou* medallions. All precisely and finely painted in bright enamels. The porcelain is of remarkable translucency.

Diameter: 7 3/8 inches (18.7 cm.)

Ex: Private American Collection, acquired from our Gallery in the 1980's.

Prior in a French collection.

Famille verte porcelains with the type of decoration are rare. Related examples in varying forms from the Imperial and other noble collections may be found in the Palace Museum, Beijing.

15. Very Rare Pair of Chinese Mirror Black and Rouge de Fer Porcelain Triple Gourd Vases

KANGXI PERIOD, CA: EARLY 18TH CENTURY

Of beautiful form. Decorated on the upper and lower bulbs with gilt reserves of flowers against the mirror black ground; the central bulb with flowering plants in rouge de fer. An extremely rare type. Related examples are in the Zwinger Museum, Dresden from the historic collection of Augustus the Strong, Elector of Saxony and King of Poland (1670-1733).

Height: 10 1/4 inches (26 cm.)

Ex: New England Collection in the early 1980s (acquired from our Gallery)

Ex: Mary Kosinski-Weir Collection (acquired from our Gallery in the 1960's)

Prior: Dutch Collection



16

16. Carved Chinese Jadeite Group of a Vase and Cover

19TH CENTURY

Finely carved in the full round. The central covered archaistic vase is flanked by the Ho-Ho Erxian (Happiness Twins) with their associated Three Legged Toad- all conveying Happiness and Good Fortune.

The stone of an attractive variegated light apple-green and white color.

Height: 8 ¾ inches (21.3 cm.)

Ex: Important Private American Collection acquired from the renowned dealer Edgar Goré (England) in the early 1900s (descended in the family).

Illustrated and described: *Chinese Porcelain and Hard Stones*, Goré and Blacker, 1911, Volume 2, Plate 238.

With period carved wood base.

17. Pair of Chinese Root Carvings of Daoist Immortals

CA: 18TH/ 19TH CENTURY

Ingeniously carved from curved and flattened rootwood that incorporates the natural forms into the sculpture.

The wood, of beautiful tone and texture.

Each mounted on separate wood bases.

Heights with bases:
9 and 9 ½ inches (22.5 and 24 cm.)

The figures are reminiscent in style to 17th and 18th century soapstone carvings that were sent to Europe and featured in the *Kunstkammern* of the major collectors of the time.

18-20. Group of Chinese Miniature Monochrome Porcelain Vases

18TH/ EARLY 19TH CENTURY

Including a Café-au-Lait globular vase (similar ones in the Augustus the Strong Collection, Dresden), a Celadon meiping, and a pair of Sang de Boeuf/ deep copper red vases.

Heights: 3, 3 ¾, and 2 ½ inches (7.5, 9.5, and 5.3 cm.)

Ex: Private American Collection

Ex: Gerry Mack Collection, New York, mid-1900's



17



18



19



20



21

21. Chinese Painted Fan with a Scene of the Hongs and Harbor of Canton

CA: 1847-1856

Finely painted, displaying the lively commercial harbor of Canton, featuring the foreign Hong warehouses, each with their respective country's flag-and notably including the American flag. Finely painted in great detail in bright colors.

Custom framed:
Length: 26 ½ inches (67 cm.)



22



23



22. Chinese Export Silver Footed Dish

MARKED: WANG HING 90 AND IDEO
CA: LATE: 19TH / EARLY 20TH CENTURY

The round saucer shaped top supported upon a triad of bamboo; the rim, done in openwork with rampant dragons chasing pearls; the lower base, with three rampant dragons. Of elegant form and fine quality.

Height: 6 ¾ inches (17.3 cm.)

Ex: Private American Collection

23. Chinese Carved Buffalo Horn Figure of a Woman Immortal,

CA: 18TH CENTURY

Finely carved in the full round. The Lady is dressed in an elegant long robe and carries a large flowering branch.

Mounted upon a carved wood base.

Height: 6 inches (15 cm.)

Ex: Dutch Private Collection (acquired in the Far East in the early 1900s)

24. Fine Pair of Chinese Export Porcelain Peach-Toned “Pistol-Handled” Urns and Covers

QIANLONG PERIOD, CA: SECOND HALF 18TH CENTURY

Of fine classic form and of unusual color (usually found in blue and white or famille rose tones). Decorated with landscape medallions, all finely set against the peach-toned ground with gilding. Surmounted by a dome shaped cover with knob finial. Of fine and impressive form, and very beautifully decorated.

Height: 14 ¾ inches (37.5 cm.)

Greatest width: 9 inches (22.8 cm.)

Depth: 7 ¼ inches (18.5 cm.)

An almost identical pair of Urns are in the American Wing of the Metropolitan Museum of Art. Others of varying type and decoration are in important American and European collections including many at Winterthur.

25. Superb Chinese Export Reverse Glass Painting

CA: 1790-1800

Faithfully based upon the mezzo tint by Maria Cosway (ca: 1785) of the scene from Edmund Spenser's *The Faerie Queene*, Book V, Canto I. Spenser's epic allegorical poem on virtue was written in the late 16th century and presented to Queen Elizabeth.

Framed: 32 ½ x 26 inches (82.5 x 66 cm.)

This is an unusual subject to have entered into the China Trade and emerge as a reverse glass painting. Certainly, one of Cosway's prints of this subject was taken to China and copied in this very difficult technique by an artist in Canton, and then exported to England. The quality of the painting is masterful and the faithfulness to the original is of note. The colors are also wonderfully done. The complexity of the reverse glass painting technique was mastered in China and was an element of the China Trade from the 18th century onward. The fragility of the glass and its surviving the journey is further both fortunate and remarkable. An original print by Cosway of this scene is in the British Museum.



25



26

26. Chinese Scholar's Rock, Ying Type

Of remarkable horizontal form resembling a dragon. Of striated form with characteristic dimpled surface and light gray color.

Length: 22 inches (56 cm.)

Height: 10 ¾ inches (27.4 cm.)

Mounted on a fitted wood base.

Ex: American Collection, acquired from our Gallery in the 1980's.

Prior in a New England Collection



RALPH M. CHAIT GALLERIES INC.

ESTABLISHED 1910

16 East 52nd Street, 10th Floor, New York, NY 10022

Tel: 212-397-2818 info@rmchaitgal.net www.rmchait.com