

Ralph M. Chait Galleries INC.

CHINESE ART

CELEBRATING OUR 110th YEAR



WINTER 2020



16 East 52nd Street, 10th Floor, New York, NY 10022
Tel: 212-397-2818 Email: info@rmchaitgal.net
Web: www.rmchait.com

We are delighted to share with you this beautiful and diverse group of Chinese porcelain and works of art.

Your inquiries and visit to our New York Gallery are welcome!

From January 24- February 2, we will be exhibiting at the Winter Show in New York. We look forward to welcoming you there!

With Best Wishes for The Holidays and 2020!



2

1. FINE AND RARE LARGE
CHINESE FAMILLE VERTE
GLAZED BISCUIT PORCELAIN
FIGURE OF GUANYIN

(ILLUSTRATED ON COVER)

KANGXI PERIOD, AD 1662-1722

Height with base: 29 inches (73.6 cm)

Ex Collection: John D. Rockefeller, Jr.
(descended in a branch of the family)

Ex Collection: J.P. Morgan

Illustrated and described: *Catalogue of The
Morgan Collection of Chinese Porcelains*, Vol. I,
1904, Plate XXXI, Case XXIII, No. 567.

Exhibited: Metropolitan Museum of Art, NY
from the late 19th century through 1913.

2. RARE PAIR OF CHINESE
FAMILLE NOIRE PORCELAIN
CUPS AND SAUCERS

KANGXI PERIOD, AD 1662-1722

Height: 2 ½ inches (6.3 cm)

Diameter: 6 ¼ inches (16 cm)

Ex: Francis Caro, New York (successor to C.T.
Loo)

Ex Collection: Sir Richard Bennett, England



3

3. CHINESE TURQUOISE GLAZED PORCELAIN TEAPOT

KANGXI PERIOD,
AD 1662-1722

With openwork design of
the Three Friends of Winter:
pine, prunus, and bamboo.
Very rare in this color.

Height: 5 $\frac{5}{8}$ inches (14.5 cm)

4. PAIR OF CHINESE UNGLAZED POTTERY ZODIAC FIGURES

TANG DYNASTY,
AD 618-907

Rooster and Horse,
Finely modeled, and
retaining vestiges of
polychrome decoration.
Height: 13 inches (33 cm)
TL tested.



4



5

**5. FINE PAIR OF CHINESE
BLUE AND WHITE
PORCELAIN DRAGON
DISHES**

KANGXI PERIOD,
AD 1662-1722

Finely painted amidst flame
and cloud scrolls.

Diameter: 6 ¼ inches (16 cm)

Ex Collection: Winston Guest

**6. CHINESE FAHUA
GLAZED STONEWARE
FIGURE OF ZHENWU,
MING DYNASTY,
17TH CENTURY**

Daoist Deity of the North,
Finely modeled, the figure
posed seated upon a high-
backed throne with feet resting
above a tortoise and snake.

Height: 13 ½ inches (34 cm)

Ex: Private American Collection



6



7, 8

**7. FINE CHINESE VERTE
GLAZED BAMBOO
FORM PORCELAIN
TEAPOT**

KANGXI PERIOD,
AD 1662-1722

Based upon a Yixing type.
Finely painted in deep enamels.

Height: 4 ½ inches (11.5 cm)

Similar examples: Gow and Taft
Collections

**8. CHINESE FAMILLE
VERTE GLAZED
PORCELAIN TEAPOT**

KANGXI PERIOD,
AD 1662-1722

Of bamboo form with
overarching handle. Decorated
in a very rare bamboo design.

Height: 6 ¼ inches (15.8 cm)

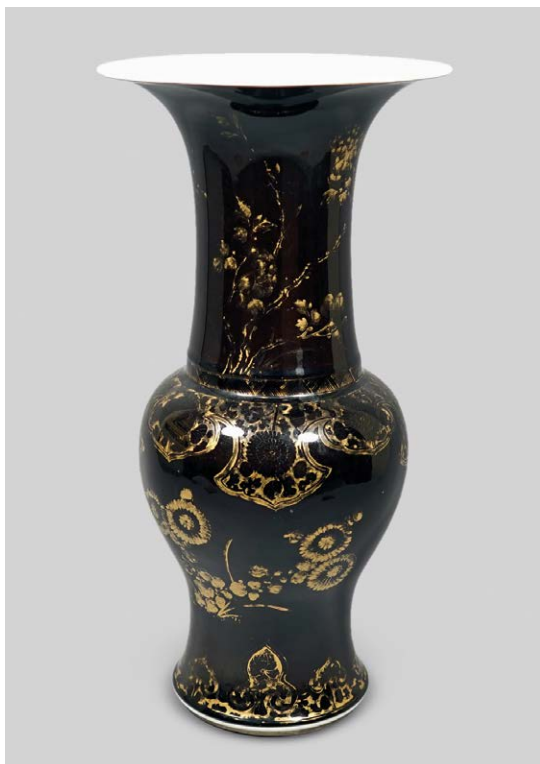
**9. FINE CHINESE MIRROR
BLACK GLAZED
PHOENIX-TAIL
PORCELAIN VASE**

KANGXI PERIOD, CA:
EARLY 18TH CENTURY

Of fine form. With vestiges
of gilt decoration in beautiful
contrast.

Height: 18 inches (46 cm)

Similar and related examples:
Collection of Augustus the Strong
(Dresden), the British Museum, and
the Palace Museum, Beijing.



9

10. IMPERIAL CHINESE
ROUGE DE FER
GLAZED PORCELAIN
BIRTHDAY DISH

KANGXI PERIOD,
CA: EARLY 18TH CENTURY

With an *anhua* hidden
decoration of four characters
reading: *Hong Fu Qi Tian*:
(Happiness as Vast as Heaven)
two Imperial five-clawed
Dragons, and flame scrolls.
The rim, with bats to convey
good fortune.

With apocryphal Chenghua
mark.

Diameter: 6 ¾ inches (17 cm)

Ex: Warre Collection (England-
early 20th century collection)

Similar examples: Shanghai
Museum; the Palace Museum,
Beijing; and the Meiyintang and
Barbara Hutton Collections



10



11

11. CHINESE ROSE VERTE PORCELAIN PLATE

YONGZHENG PERIOD, AD 1723-1735

Decorated with a Mandarin duck amidst flowering plants.

Diameter: 14 inches (35.3 cm)

Published: *La Famille Rose* by Goidsonhoven, p. 32, 33.



12

**12. PAIR OF CHINESE
FAMILLE VERTE
GLAZED BISCUIT
PORCELAIN FU DOGS**

KANGXI PERIOD,
AD 1662-1722

Finely modeled, each with
joss stick holder with *Shou*
characters for Long Life.
A particularly fine and rare
model.

Height: 7 $\frac{3}{8}$ inches (18.8 cm)

A similar single example is
illustrated in *La Porcelaine de
Chine* by du Sartel, 1881, Pl. XI.

**13. FINE CHINESE
CELADON GLAZED
PORCELAIN BOTTLE
VASE**

QIANLONG/ JIAQING
PERIOD, CA: MID-18TH/
EARLY 19TH CENTURY

Decorated with a beautiful
uniform light-toned glaze.

Height: 14 $\frac{1}{2}$ inches (37 cm)



13



14

**14. PAIR OF CHINESE
REVERSE GLASS
PAINTINGS**

CA: SECOND HALF 18TH
CENTURY

Depicting a night scene with a
couple, one in Winter, the other
in Summer. With Chinese
frames.

Size: 6 ¾ x 9 inches
(17.2 x 22.8 cm)

Ex: English Collection

**15. VERY RARE PAIR OF
CHINESE EXPORT
SILVER CANDLESTICKS**

CA: MID-LATE 19TH
CENTURY

With glass hurricane shades.

Mark to the underfoot of each:
Da Guan and 90 SILVER

Height with shades: 25 inches
(63.6 cm)

Note: We are aware of only one
other set of similar candlesticks
that once belonged to the famed
physician Rev. and Hon. Peter
Parker: Forbes, *Chinese Export Silver*,
1975, No. 56, Fig. 186.



15